

CONE-SHAPED CONCEALED HEAD SCREW

ORGANIC COLORED COATING

Carbon steel version with colored anti-rust coating (brown, grey, green, sand and black) for outdoor use in non acid timbers (T3).

COUNTER THREAD

The inverse (left-hand) under-head thread guarantees excellent grip. Small conical head to ensure it is hidden in the timber.

TRIANGULAR BODY

The three-lobed thread makes it possible to cut the wood grain during screwing. Exceptional timber pull-through.



DIAMETER [in]

0.14 **0.21 0.24** 0.32

LENGTH [in]

13/16 **1 11/16 4 3/4** 12 5/8

EXPOSURE CONDITION

EC1

ATMOSPHERIC CORROSIVITY

C1 C2 C3

WOOD CORROSIVITY

T1 T2 T3 T4

MATERIAL

ORGANIC COATING carbon steel with colored organic anti-rust coating



FIELDS OF USE

Outdoor use.
Wooden boards with density of < 780 kg/m³ [G = 0.92] (without pre-drill) and < 880 kg/m³ [G = 1.05] (with pre-drill).
WPC boards (with pre-drill).

CODES AND DIMENSIONS

KKT BROWN



d ₁	CODE	L		b		A	pcs
[mm] [in]		[mm]	[in]	[mm]	[in]	[in]	
5,1 0.21 #11 TX 20	KKTM540	43	1 11/16	25	1	3/4	200
	KKTM550	53	2 1/16	35	1 3/8	3/4	200
	KKTM560	60	2 3/8	40	1 9/16	1	200
	KKTM570	70	2 3/4	50	1 15/16	1	100
	KKTM580	80	3 1/8	53	2 1/16	1 1/4	100
6 0.24 #14 TX 30	KKTM660	60	2 3/8	40	1 9/16	1	100
	KKTM680	80	3 1/8	50	1 15/16	1 1/4	100
	KKTM6100	100	4	50	1 15/16	2	100
	KKTM6120	120	4 3/4	60	2 3/8	2 1/2	100

KKT GREY



d ₁	CODE	L		b		A	pcs
[mm] [in]		[mm]	[in]	[mm]	[in]	[in]	
5,1 0.21 #11 TX 20	KKTG540	43	1 11/16	25	1	3/4	200
	KKTG550	53	2 1/16	35	1 3/8	3/4	200
	KKTG560	60	2 3/8	40	1 9/16	1	200
	KKTG570	70	2 3/4	50	1 15/16	1	100
	KKTG580	80	3 1/8	53	2 1/16	1 1/4	100

KKT GREEN



d ₁	CODE	L		b		A	pcs
[mm] [in]		[mm]	[in]	[mm]	[in]	[in]	
5,1	KKTV550	53	1 15/16	35	1 3/8	3/4	200
0.21 #11	KKTV560	60	2 3/8	40	1 9/16	1	200
TX 20	KKTV570	70	2 3/4	50	1 15/16	1	200

KKT SAND



d ₁	CODE	L		b		A	pcs
[mm] [in]		[mm]	[in]	[mm]	[in]	[in]	
5,1	KKTS550	53	1 15/16	35	1 3/8	3/4	200
0.21 #11	KKTS560	60	2 3/8	40	1 9/16	1	200
TX 20	KKTS570	70	2 3/4	50	1 15/16	1	200

KKT BLACK



d ₁	CODE	L		b		A	pcs
[mm] [in]		[mm]	[in]	[mm]	[in]	[in]	
5,1	KKTN540(*)	43	1 11/16	36	1 7/16	3/4	200
0.21 #11	KKTN550	53	2 1/16	35	1 3/8	3/4	200
TX 20	KKTN560	60	2 3/8	40	1 9/16	1	200

(*)Not holding CE marking.

KKT COLOR STRIP

Bound version available for fast and accurate installation.
Ideal for large projects.

For information on screwdriver and additional products see page 431.

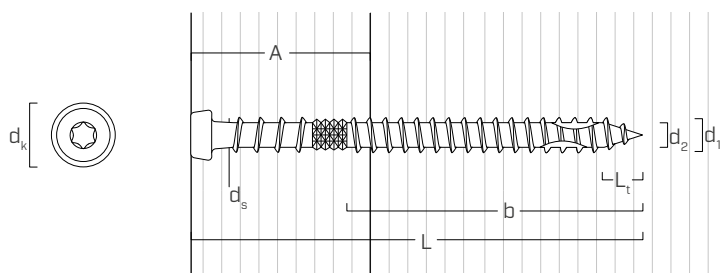


KKT BROWN

d ₁	CODE	L		b		A	pcs
[mm] [in]		[mm]	[in]	[mm]	[in]	[in]	
5,1 0.21 #11 TX 20	KKTMSTRIP540	43	1 11/16	25	1	3/4	800
	KKTMSTRIP550	53	2 1/16	35	1 3/8	3/4	800

Compatible with KMR 3371 loaders, code HH3371 with appropriate TX20 bit (code TX2075).

GEOMETRY



Nominal diameter	d ₁	[in] ⁽¹⁾	0.21	0.24
Outer thread diameter	d ₁	[mm]	5,1	6
		[in]	0.201	0.236
Head diameter	d _k	[in]	0.266	0.305
Root diameter	d ₂	[in]	0.118	0.154
Shank diameter	d _s	[in]	0.159	0.173
Tip length	L _t	[in]	0.201	0.236
Pre-drilling hole diameter ⁽²⁾	d _v	[in]	1/8 - 9/64	9/64 - 5/32

⁽¹⁾The nominal diameter of the screw is converted into imperial units and rounded up to the nearest decimal point.

⁽²⁾For high density materials, pre-drilled holes are recommended based on the wood species.

FAS A4 | AISI316

SCREWS FOR FAÇADES

OPTIMISED GEOMETRY

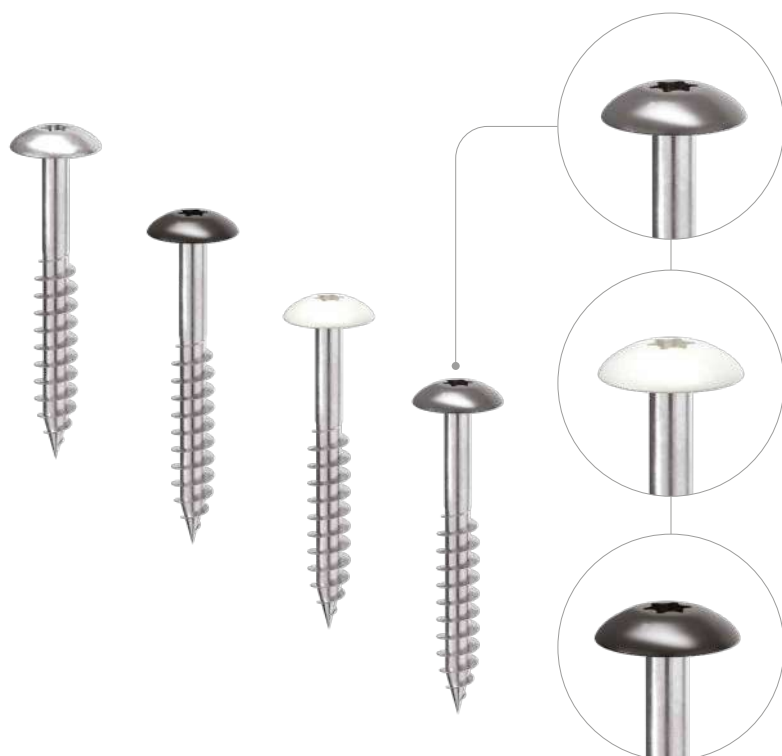
Thanks to its flange head, partially threaded body and self-drilling tip, it is the appropriate screw for fastening façade panels (HPL, fibre cement sheets, etc.) on timber battens.

A4 | AISI316

A4 | AISI316 austenitic stainless steel for high corrosion resistance. Ideal for environments adjacent to the sea in corrosivity class C5 and for insertion on the most aggressive timbers in class T5.

COLORLED HEAD

Available in white, grey or black for perfect color uniformity with the panel. The color of the head can be customised on request.



DIAMETER [in]

0.14 0.19 0.32

LENGTH [in]

13/16 1 1/2 12 5/8

EXPOSURE CONDITION



ATMOSPHERIC CORROSIVITY

☐ C1 ☒ C2 ☐ C3 ☐ C4 ☐ C5

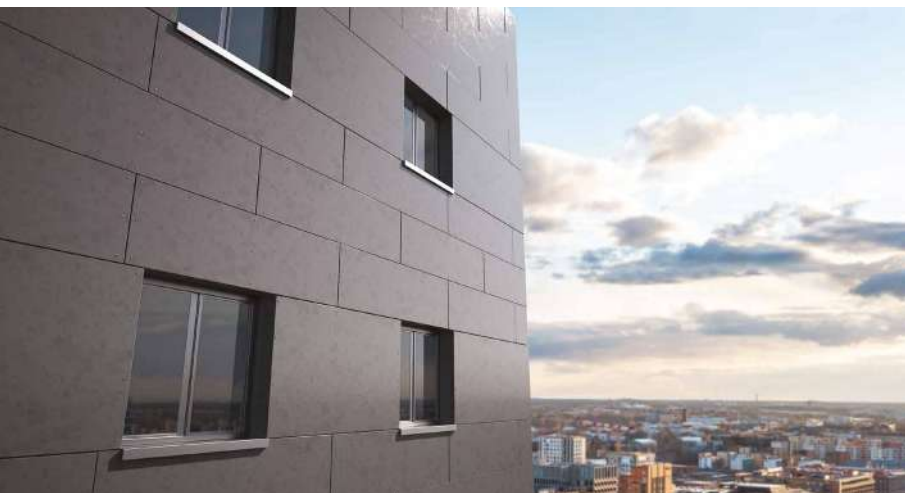
WOOD CORROSIVITY

☐ T1 ☐ T2 ☐ T3 ☐ T4 ☐ T5

MATERIAL

A4
AISI 316

A4 | AISI316 austenitic stainless steel
(CRC III)




FIELDS OF USE


It can be used outdoors in aggressive environments. Fixing of façade elements (HPL panels, fibre cement slabs, etc.) to timber substructures.

CODES AND DIMENSIONS


FAS: stainless steel

	d_1 [mm] [in]	CODE	L		b		pcs
			[mm]	[in]	[mm]	[in]	
	4,8 0.19 #10 TX 20	FAS4825	25	1	17	11/16	200
		FAS4838	38	1 1/2	23	7/8	200


FAS W: RAL 9010 - white

	d_1 [mm] [in]	CODE	L		b		pcs
			[mm]	[in]	[mm]	[in]	
	4,8 0.19 #10 TX 20	FAS4825	25	1	17	11/16	200
		FAS4838	38	1 1/2	23	7/8	200

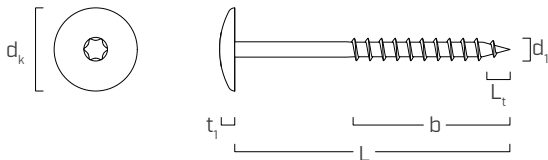
FAS N: RAL 9005 - black

	d_1 [mm] [in]	CODE	L		b		pcs
			[mm]	[in]	[mm]	[in]	
	4,8 0.19 #10 TX 20	FAS4825	25	1	17	11/16	200
		FAS4838	38	1 1/2	23	7/8	200

FAS G: RAL 7016 - anthracite gray

	d_1 [mm] [in]	CODE	L		b		pcs
			[mm]	[in]	[mm]	[in]	
	4,8 0.19 #10 TX 20	FAS4825	25	1	17	11/16	200
		FAS4838	38	1 1/2	23	7/8	200

GEOMETRY



Nominal diameter	d_1	[in] ⁽¹⁾	0.19
Outer thread diameter	d_1	[mm]	4,8
		[in]	0.189
Head diameter	d_k	[in]	0.484
Head thickness	t_1	[in]	0.106
Tip length	L_t	[in]	0.189

⁽¹⁾The nominal diameter of the screw is converted into imperial units and rounded up to the nearest decimal point.



COMPATIBILITY

FAS is compatible with the most common fibre cement and HPL façade panel systems.